



# KNIFE GATE VALVES

## DB SERIES



WEY DESIGN

ORIGINAL

# DB SERIES

The “double block and bleed” knife gate valve was specially developed for applications using hazardous media. The DB model is a single valve with two seat areas. In the closed position, these provide a seal against pressure from both ends of the valve, and there purge ports to flush the cavity between the seat areas. The DB model thus makes complex and costly multiple valve systems redundant. In spite of these cost benefits, it offers zero leakage protection in difficult applications.



## CHARACTERISTICS DB SERIES

---

# 80 – 750 mm

Nominal sizes

---

# Stainless steel, Special material

Material

---

# 0 – 10 bar

Pressure rating

---

# ANSI Class 150

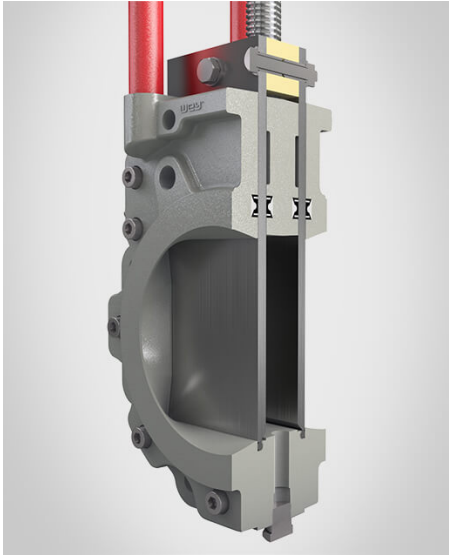
Flange drilling

---

# Special length

Face to face dimension

---



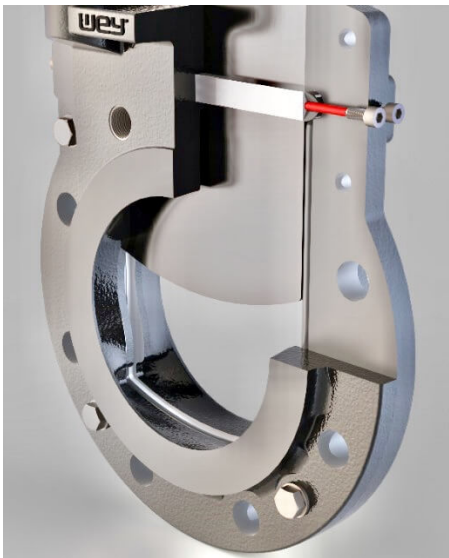
Two gates provide additional security. The medium can be flushed out in the gap between them.



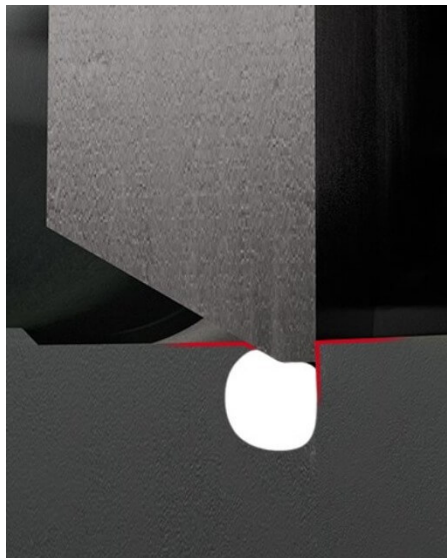
Robust 4-post topwork for maximum load and a wide variety of actuator types.



A unique transverse seal, consisting of a transverse seal profile and packing compound, makes the body bubble-tight towards the atmosphere.



The transverse seal can be repacked at any time and under full pressure using the lateral packing screws.



In the closed end position, the gate is also mechanically supported.

## APPLICATION AREAS

### Pulp and paper industry

e.g. Chemical solutions, bleaching agents ...

## MATERIAL OF CONSTRUCTION

Part	Stainless steel
Body	Edelstahl CF8M
Gate	1.4404*
Seal	Aflas
Topwork	Carbon steel
Stem / Piston rod	430F

Other materials upon request

\* hard chromed

## CORROSION PROTECTION

Topwork	2 Comp. Epoxy-Polyamide Resin Primer, 2 Comp. Polyurethane-Enamel-Top Coat
Screws	Stainless steel

## ACTUATORS



**Handwheel**

---



**Bevel gear**

---



**Pneumatic cylinder**

---



**Hydraulic cylinder**

---



**Electric actuator**

---

## DOWNLOADS

### General documents

---

Product brochure knife gate valves	PDF	<a href="#">↓</a>
Instruction manual	PDF	<a href="#">↓</a>
Seal arrangement	PDF	<a href="#">↓</a>
Lubricants	PDF	<a href="#">↓</a>
Declaration of conformity DGRL	PDF	<a href="#">↓</a>

---

### Data sheets

---

DB with handwheel	PDF	<a href="#">↓</a>
DB with bevel gear	PDF	<a href="#">↓</a>
DB with pneumatic cylinder	PDF	<a href="#">↓</a>

---

### CAD files

---

DB with handwheel 2D (DXF/DWG)	ZIP	<a href="#">↓</a>
DB with handwheel 3D (STEP)	ZIP	<a href="#">↓</a>
DB with bevel gear 2D (DXF/DWG)	ZIP	<a href="#">↓</a>
DB with bevel gear 3D (STEP)	ZIP	<a href="#">↓</a>

---





**CONTACT US FOR YOUR TAILOR-  
MADE SOLUTION.**